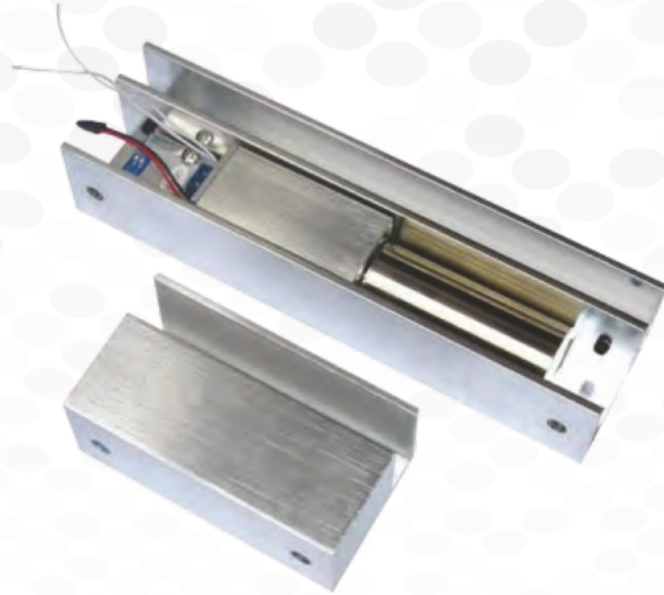


FULLY FRAMELESS GLASS DOOR LOCK



Product Description

- Glass thickness : 8-15mm
- Size: 205L x 58M x 46H(mm)
- Net Weight: 1.6Kg
- Standard structure: stainless steel panel
- Suitable for : fully frameless glass door
- Opening mode : 180 swing double door

Product Specification

Fail Safe	Locked when energized
Face Plate	205Lx35WX41H(mm)
Strike	90Lx25Wx2H(mm)
Bolt	16mmDIA, stainless steel 16mm throw
Autolock Time Delay:	0, 3, 6, 9sec
Signal Output	Door status Output, NC/COMv Voltage: DC12V
Start Current	900mA
Standby Current	150mAv Solid Bolt: Polishing housing, 800Kg Holding Force
Suitable For	Fully Frame Less Glass Door
Surface Temp	Low Temperature
Induction Distance	8mm
Operating temp	-20°C ~ 60°C
Special Designed	Tested to 500000 cycles