

ATF-305 1K

WiFi In-Built

Cloud In-Built

1,000 Face/Card/Password

10,000 Fingerprint



Face Recognition Time & Attendance Terminal

ATF-305 1K face recognition time & attendance terminal support up to 1,000 face templates, 10,000 fingerprint 1,000 card/password with TimeWatch latest hardware platform and algorithm, it offers brand new and user-friendly operation interface to provide smooth user experience. With advanced face algorithm and multi-biometric verification technology, the terminal's security level of verification is significantly enhanced.

Features

- 1,000 face and 10,000 fingerprint /
- 1,000 card /password templates
- High verification speed
- Advanced and user-friendly UI
- Built-in battery backup
- Providing approximately 2 to 4 hours of continuous operation (depend on usage)
- New framework firmware, easy to extend functions and customize client's requirements
- One face template is registered for one user only
- Built in access control
- Time Zone
- Door (Open/Close)
- User - Validity
- **Cloud In-Built**
- **WiFi In-Built**

SPECIFICATIONS

- User Capacity : **1,000 Face, 10,000 fingerprint & 1,000 Card/password**
- Log Capacity : 160000
- Communication Interface : TCP/IP, (LAN / WAN)
- FRR : 0.001%
- FAR : 0.00001%
- LCD : 2.8" TFT Color Screen
- Verification Time : <0.5 Sec
- Identification Mode : FP, ID+FP, PW, FP+PW
- Fingerprint Image Display : Yes
- Operating Voltage: 5V/2A
- Battery Backup: Yes
- Access Control : Yes
- Sensor : 600DPI
- **WiFi In-Built**
- **Cloud In-Built**

Applications



Education



Retail



Government



Health



Logistics



Bank

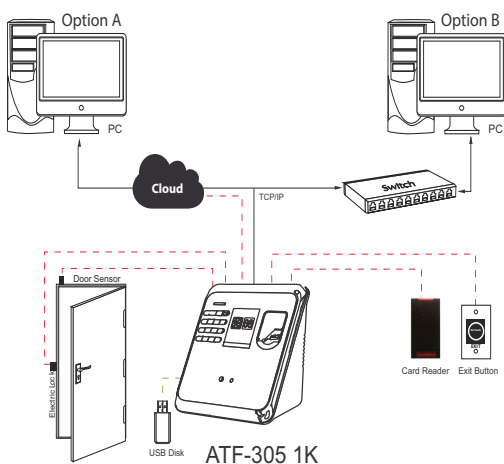


Office



Factory

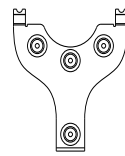
Configuration



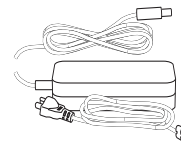
What's in the Box



ATF-305 1K



Back Plate



Power Adapter



Lines for Access Control Interface



Screws and Holders

www.timewatchindia.com