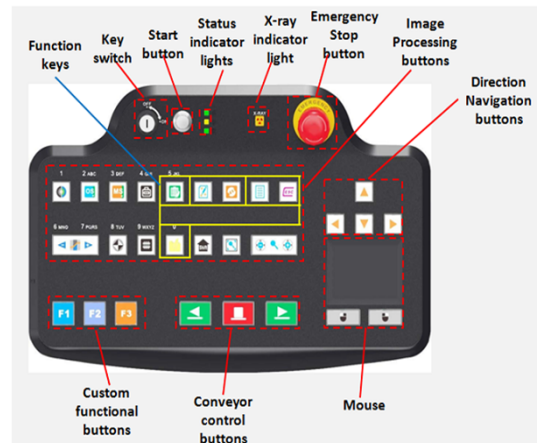
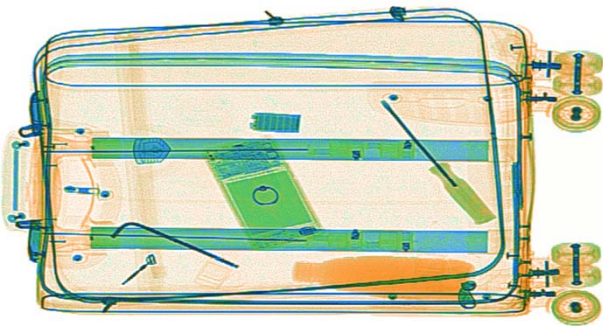


# X-Ray Baggage Scanner

## AT8065

### Product highlights

- \* Multilingual operation
- \* Automatic built in test and self diagnosis
- \* Secure access Key
- \* Uninterruptable power supply (UPS) for compute
- \* Threat alert and material classification
- \* Auto archiving
- \* Energy saving design
- \* One key turn off
- \* Drugs and explosives inspection
- \* Indication of the date and time
- \* baggage counter
- \* Sens-Tech detection board and Hamamatsu detector



### Physical Specifications

Unit weight (kgs)	640
Unit size (mm)	2848(L)*1095(W)*1536(H)
after packed in wooden pallet -	
Gross weight (kgs)	800
Packing size	#1: 212*122*177cm #2: 122*90*141cm

## General Specifications

Tunnel size(mm)	800(L)*650(W)
Conveyor Speed(m/s)	0.22
Conveyor height(mm)	341
Conveyor Max Load(kgs)	200
X ray dose per each inspection	≤4μSv
X ray leakage	≤1μSv/h at any point 5 centimeters outside the external surface
Penetration	34 mm steel
Wire Resolution	dia 0.102mm copper wire (AWG38)
Penetration Resolution	dia 0.202mm copper wire (AWG32) under three-step aluminum wedge 9.5mm, 15.9mm, 22.2mm
Spatial resolution:	Horizontal:dia 1.3mm, Vertical: dia 1.3mm
Power Consumption	max. 1KW
Noise	<60 dB
Film Safety	Guarantee ASA/ISO1600 Film

## X-ray Generator (single)

Anode Voltage	140-160 KV adjustable
Ray direction	Downward
Cooling / Duty Cycle	Sealed oil cooling /100%

## Image System

X-ray Sensor	L-Shaped Photodiode Array, 12bit deep
Images process	24bit real time processing ,4colors analysis, Images displayed marked date and ID No., Count the number of bags
Image display	High resolution of 1024 * 1280 pixel; Image Grey Level: 4096
Image Enhancement	1-64times enlargement continuity, Color/BW, negative, high/low penetration enhancement, brightening, darkening, gray level scan, super enhancement, elimination of organics/inorganics, local enhancement, pseudo color processing, edge enhancement, etc.
Explosives & Narcotics Detection	Suspicious organics highlight(atomic number Zeff=7,8,9)
Suspicious Alarm	Alarm and box line the suspicious objects including hard to penetrate material, explosives and drugs
Threat Image Projection(TIP)	Inserting fictional, but realistic images of threat items into baggage during screening operation, for maintenance of vigilance, as well as training and assessment of image identification capability
Image Recall	30 images recallable

Image Archive	Up to 50,000 images stored automatically, enable transferring to USB disk, and converting to JPG, BMP and other general formats
Miscellaneous Functions	Time/date display, counters, user management, system-on/X-ray-on timers, power on self test, built-in diagnostic facilities, dual-direction scanning, system log, system standby and stimulant training, etc.
Network Applications	Option: Multiple remote applications available based on Ethernet LAN and windows platform, such as image centralized storage and identify, recheck workstation etc.

## Operating Environment

Operation temperature/Humidity	5°C-40°C / 0%-90%(non-condensing)
Storage Temperature/Humidity	-20°C to 60°C / 10%-90%(non-condensing)
Operation Power	220VAC(±10%) 50±3Hz (Optional: 100VAC,110VAC,120VAC,200VAC)
UPS	Options: 15mins, 30mins, 60mins etc

## Computer and other

Monitor	2 17-inch LCD monitors, 1280*1024, one console desk
RAM	4GB
Hard Disk	2T
Keyboard	Special designed
System	Windows 10
Electric roller	Three-phase

## Compliance

International	<ul style="list-style-type: none"> <li>* ISO19001 ; ISO14001 ; OHSMS18001 ;</li> <li>* CE RoHS</li> <li>* FDA FCC</li> </ul>
---------------	--

