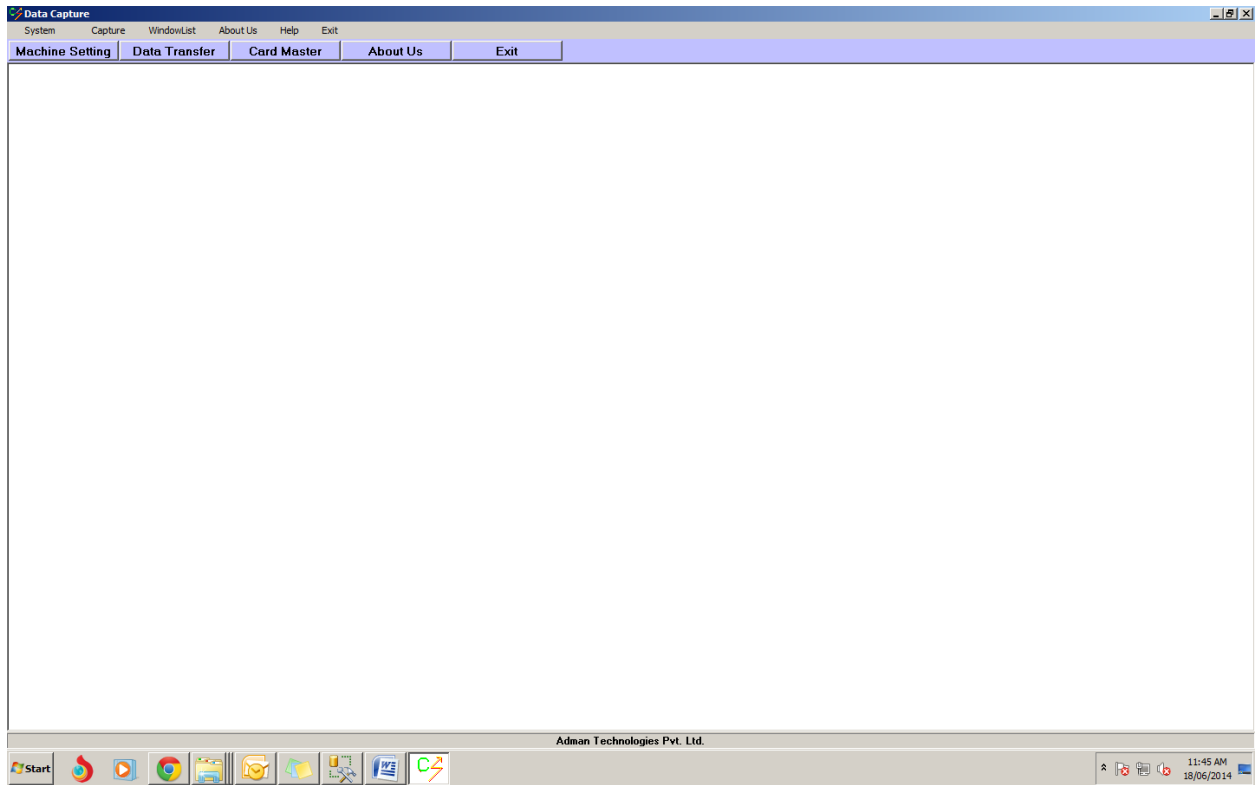
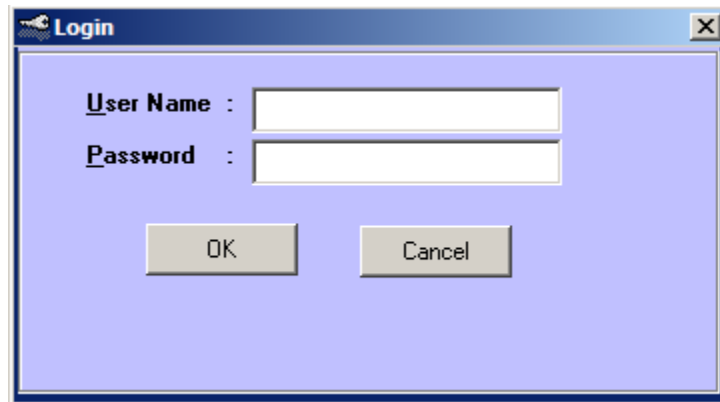


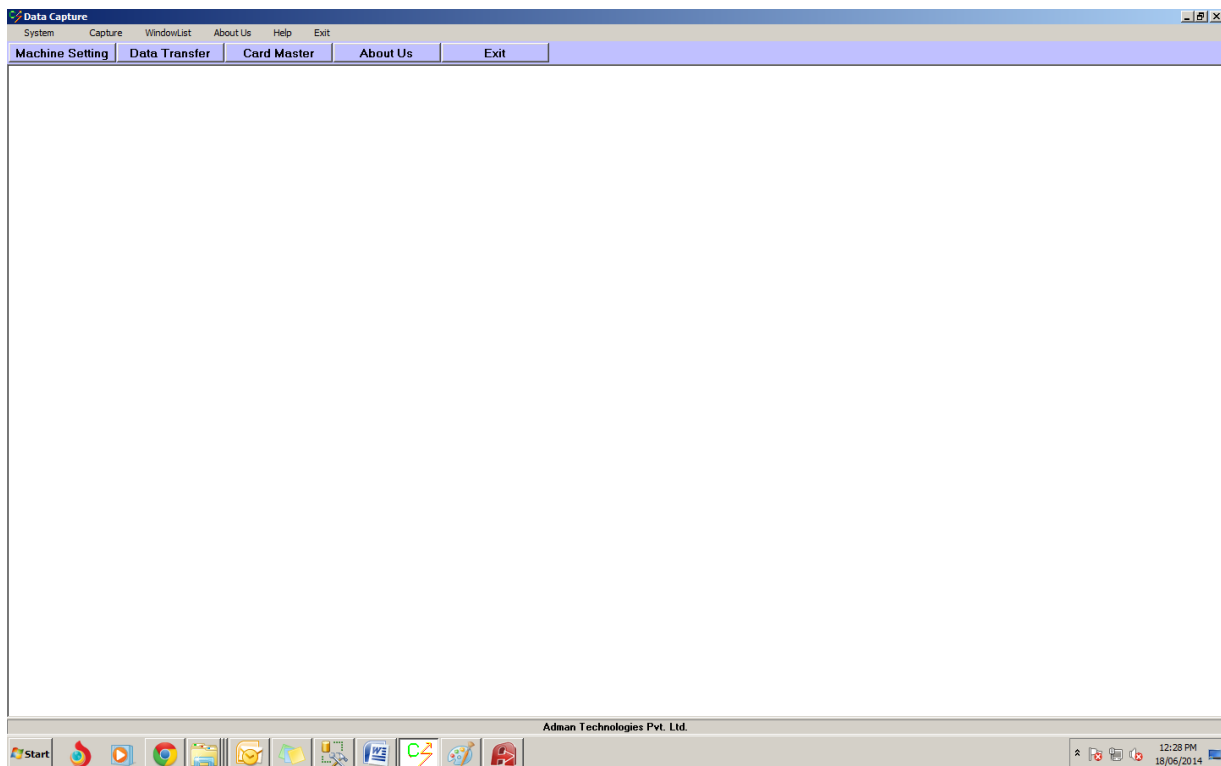
# Data Capture User Manual



Data capture is a utility through which we can download the attendance data, transfer finger prints templates from one device to another device, and upload card master data. To do this we need to run the data capture setup provided in setup CD. After running the setups run the **Data\_Capture.Exe** file. After running the application a login window will appear. Enter the user name and password to login. Default user name and password is **admin**



After login a screen will appear.



In this application following menu will be seen.

- System
- Capture
- Window List
- About Us
- Help
- Exit

In machine setting menu you can add, modify, delete device setting. Machine Setting window will be like this.

The screenshot shows a dialog box titled "Data Capture Setting Master". It contains several fields and options for configuring a device setting:

- Machine Name:** A text input field.
- Connection Type:** A dropdown menu currently showing "TCP / IP".
- TCP / IP Address & Port:** Two text input fields, the second containing "1085".
- Machine Setting:** A group box containing three radio buttons: "Four Digit Card", "Five Digit Card", and "Eight Digit" (which is selected).
- Card Write Alignment:** A group box containing two radio buttons: "Left Alignment" and "Right Alignment" (which is selected).
- DataBase:** A group box containing four radio buttons: "SQL", "Oracle", "FoxPro", and "None" (which is selected).
- Temp File Path:** A text input field with a browse button (three dots).
- Machine Location id:** A text input field.

At the bottom of the dialog box, there are six buttons: "New", "Edit", "Delete", "Save", "Cancel", and "Close".

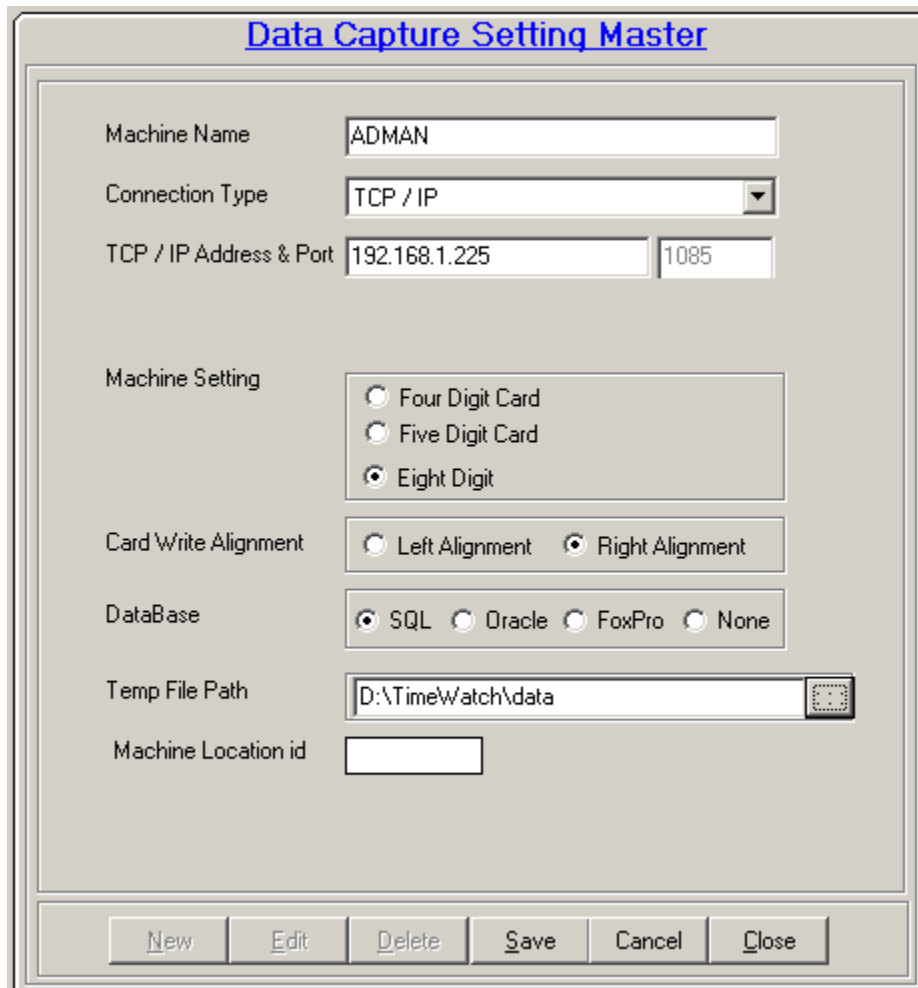
To add any new device click on New button

To edit any device click on Edit button

To delete any device click on Delete Button.

### Adding A Machine In Data Capture Utility:

To add a device in data capture utility click on new button in machine setting and a entry window will be displayed. Enter the necessary details like device name, connection type, TCP/IP address and ports, temp file path, database & click on save button.



The screenshot shows a dialog box titled "Data Capture Setting Master". It contains several input fields and radio button options:

- Machine Name:** Text box containing "ADMAN".
- Connection Type:** Dropdown menu showing "TCP / IP".
- TCP / IP Address & Port:** Two text boxes, the first containing "192.168.1.225" and the second containing "1085".
- Machine Setting:** A group box containing three radio buttons: "Four Digit Card", "Five Digit Card", and "Eight Digit". The "Eight Digit" option is selected.
- Card Write Alignment:** A group box containing two radio buttons: "Left Alignment" and "Right Alignment". The "Right Alignment" option is selected.
- DataBase:** A group box containing four radio buttons: "SQL", "Oracle", "FoxPro", and "None". The "SQL" option is selected.
- Temp File Path:** Text box containing "D:\TimeWatch\data" with a browse button icon to its right.
- Machine Location id:** An empty text box.

At the bottom of the dialog box, there are six buttons: "New", "Edit", "Delete", "Save", "Cancel", and "Close".

### Data Transfer:

To download the attendance logs from biometric device you need to capture the data. For this click on data transfer menu and a data capture window will appear. To download the data select device and click on connect button. After that date list will be displayed. Select the date list for which you want to download the data and click on transfer button.

**Data Capture**

Machine Name: ADMAN  *Memory Utilised By Reader Is 001%*

TCP/IP Address: 192.168.1.225

**Date List**

- 06/00/2014
- 02/06/2014
- 06/06/2014
- 07/06/2014
- 08/06/2014
- 09/06/2014
- 16/06/2014
- 17/06/2014

**Select Date Range**

From Date: 02/06/2014

To Date: 17/06/2014

**Date & Time Setting**

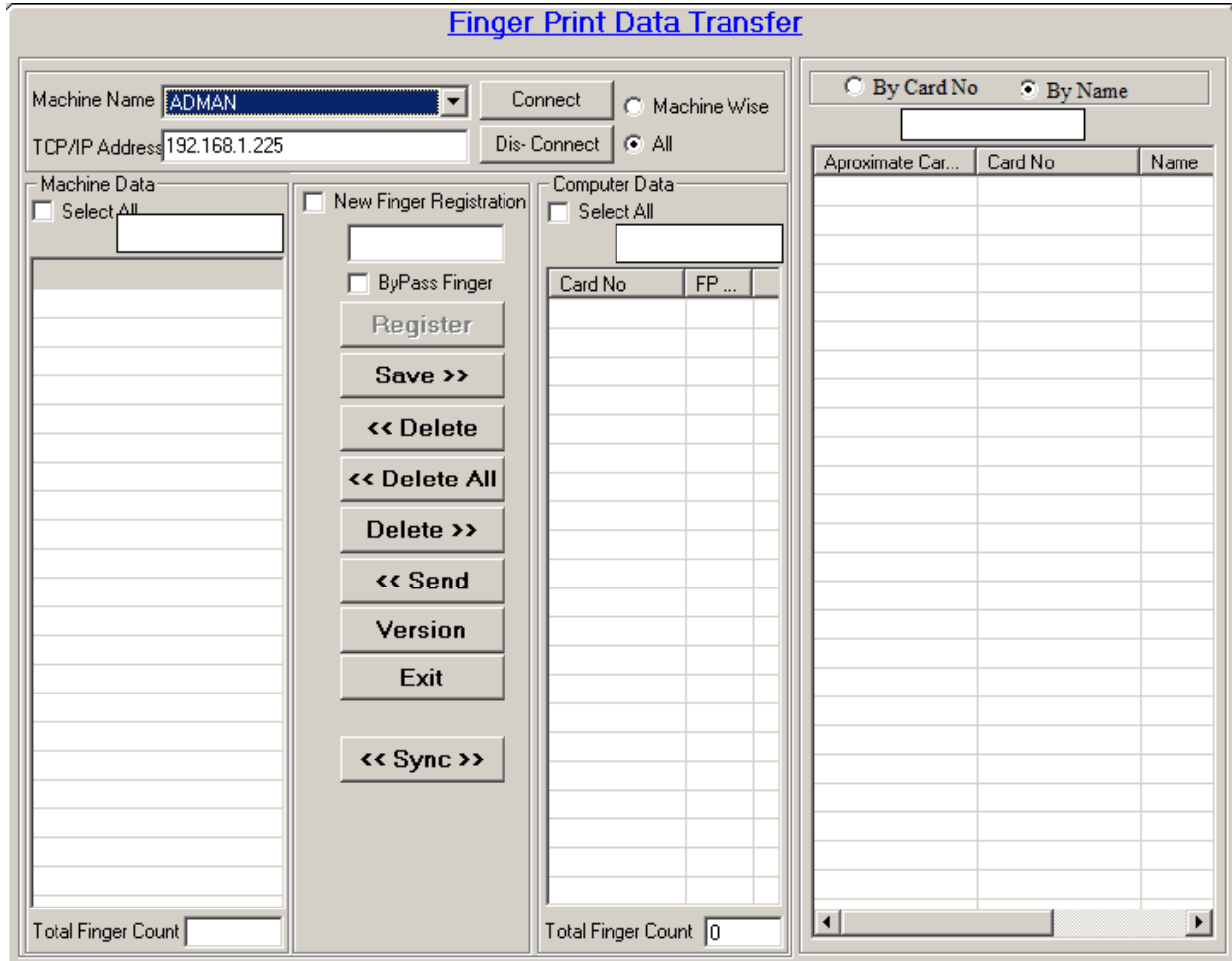
Set Date:

Set Time:

Set As Per System Date/Time

### Finger Template Transfer:

To transfer the finger prints from one device to another device you need to sync the finger data. To do this click on Finger Transfer option from menu. First you need to connect the device from which you want to download the finger data. After connecting the device it will show the list of finger data in machine data grid. Select all the finger prints and click on save button. After saving the data it will be transferred to computer data grid. Now connect the second device on which you want to upload the data, select the number of fingerprints which you want to upload and click on send button. It will be transferred to second device.



Powered by

# TimeWatch

*Presence Perfect*

**"Thank you"**