

TimeWatch

Presence Perfect

ATF-686 New



Face Recognition Time & Attendance Terminal

ATF-686New Face Recognition Time & Attendance Terminal supports up to 1,000 face templates, 3,000 fingerprint/Card templates. With TimeWatch latest hardware platform and algorithm, it offers brand new UI and user-friendly operation interface to provide smooth user experience. With advanced face algorithm and multi-biometric verification technology, the terminal's security level of verification is significantly enhanced.

Features

- 1,000 face and 3,000 fingerprint/Card templates
- High verification speed
- Advanced and user-friendly UI
- Built-in battery backup, providing approximately 2 to 4 hours of continuous operation(depend on usage)
- New Framework firmware, easy to extend functions and customize client's requirements
- One face template is registered for one user & 3 finger
- Built In Access Control

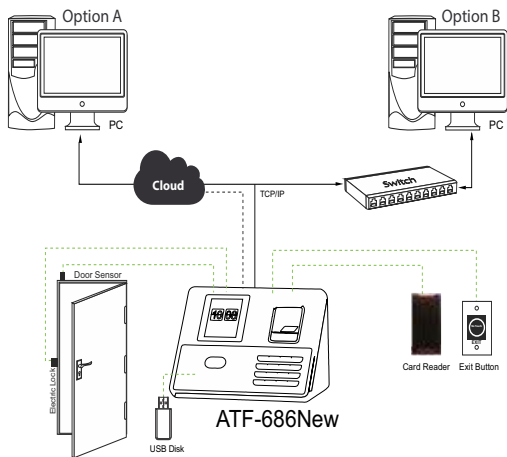
SPECIFICATIONS

Item	Description	Operating humidity	20% ~ 80%RH
Max. user	1,000	Dimensions (mm)	145*175*80
Face template capacity	1,000	Verification time	< 0.5 second [1:N]
Fingerprint template capacity	5,000	Battery Backup	Yes
Log capacity	160,000	Access Control	Yes (Lock, Push Button, Card Reader)
Password capacity	1,000	Sensor	600DPI
Card capacity	1,000 (Proximity Card)	FRR	0.001%
Authentication modes	Face / Fingerprint / Password / Card / Face+Password / Fingerprint+Password / Card+Password	FAR	0.00001%
Interface	USB host, USB slave, TCP/IP Option: Wiegand in & out, 2x relay, WiFi	Identification Time	<0.1 Sec
LCD display	2.8" TFT color screen 320x240 pixel		
Operating Voltage	DC 12V/1A		
Operating temperature	0°C ~ 40°C		

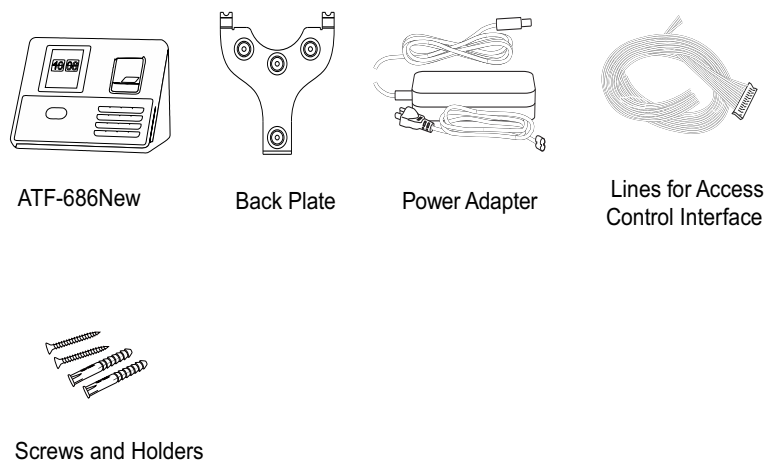
Advance Features

- Time Zone
- Door (Open/Close)
- User-Validity

Configuration



What's in the Box



www.timewatchindia.com

DISCLAIMER : Brief specification are mentioned here. Specification may change without prior notice. Customer are advised to check with us before purchase Actual product may differ slightly to that depicted for ongoing product development